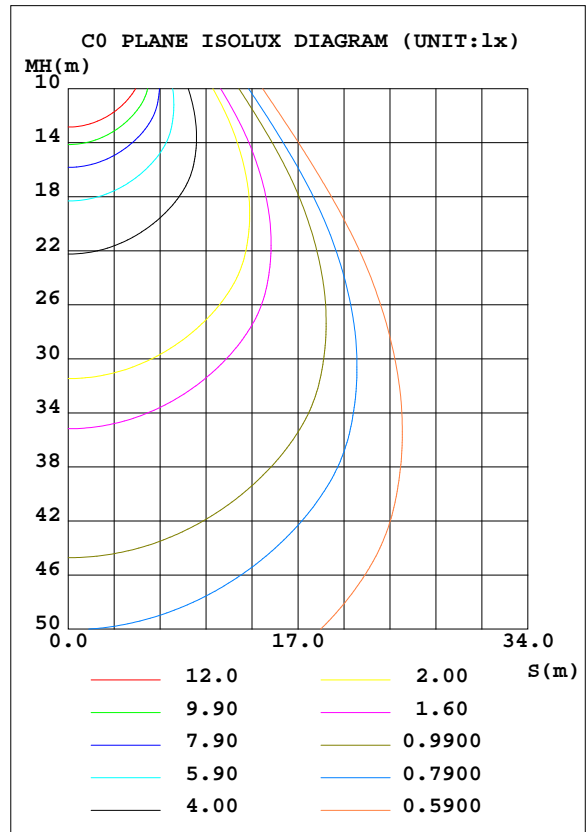
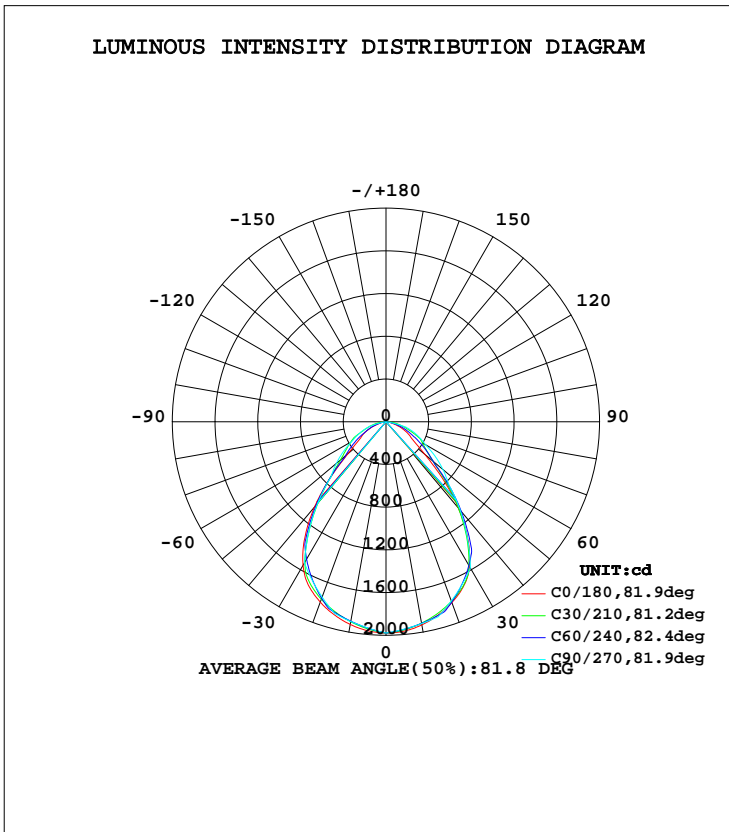


LUMINAIRE PHOTOMETRIC TEST REPORT

Test:U:230.1V I:0.1318A P:29.76W PF:0.9813 Lamp Flux:3683.7x1 lm		
NAME: IL-PN195U(S) 3.500K	TYPE:	WEIGHT:
SPEC.:	DIM.:	SERIAL No.:
MFR.: EVERFINE	SUR.:250*1150	PROTECTION ANGLE:

DATA OF LAMP		PHOTOMETRIC DATA Eff: 123.77 lm/W			
MODEL	IL-PN195U(S)	I _{max} (cd)	1979	S/MH(C0/180)	1.17
NOMINAL POWER(W)	32	LOR(%)	100.0	S/MH(C90/270)	1.15
RATED VOLTAGE(V)	230.0	TOTAL FLUX(lm)	3683.7	η UP, DN(C0-180)	0.0, 51.2
NOMINAL FLUX(lm)	3683.7	CIE CLASS	DIRECT	η UP, DN(C180-360)	0.0, 48.8
LAMPS INSIDE	1	η up(%)	0.0	CIBSE SHR NOM	1.25
TEST VOLTAGE(V)	230.0	η down(%)	100.0	CIBSE SHR MAX	1.25



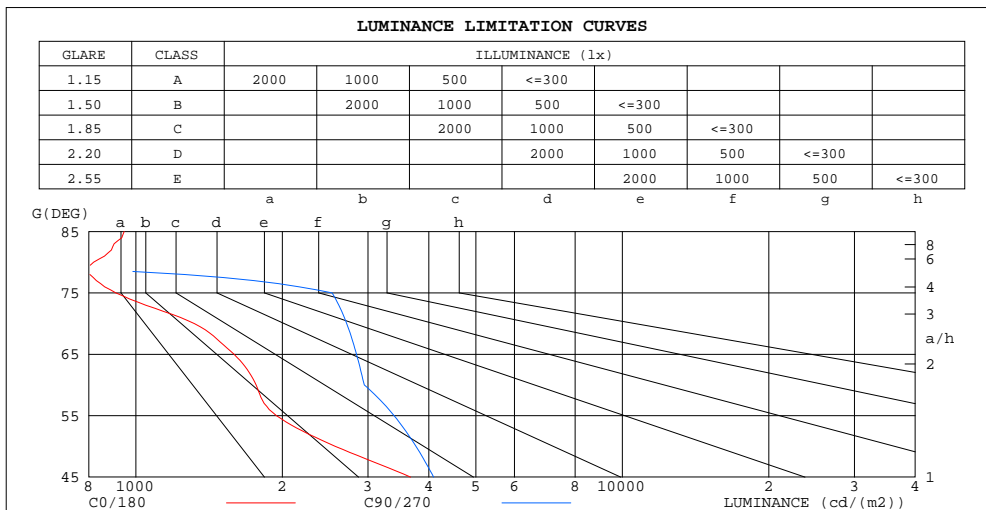
C Range: 0 - 360DEG
 C Interval: 5.0DEG
 Test Speed: HIGH
 Temperature:25.3DEG
 Operators:DAMIN
 Test Date:2023-06-21

γ Range: 0 - 90DEG
 γ Interval: 0.5DEG
 Test System:EVERFINE GO-2000A_V1 SYSTEM V2.0.286
 Humidity:65.0%
 Test Distance:13.420m [K=1.0000]
 Remarks: IL-PN195U(S) 3.500K 32W 3500K

ZONAL FLUX DIAGRAM
AND LUMINANCE LIMITATION CURVES

ZONAL FLUX DIAGRAM:

γ	C0	C45	C90	C135	C180	C225	C270	C315	γ	Φ zone	Φ total	#lum,lamp
5	1967	1953	1949	1950	1964	1943	1939	1945	0- 5	46.88	46.88	1.27,1.27
10	1932	1915	1919	1912	1928	1897	1899	1900	5- 10	138.0	184.9	5.02,5.02
15	1876	1868	1890	1865	1872	1844	1859	1846	10- 15	223.7	408.6	11.1,11.1
20	1802	1812	1787	1810	1798	1783	1748	1783	15- 20	300.3	708.9	19.2,19.2
25	1709	1689	1684	1687	1703	1649	1637	1651	20- 25	362.1	1071	29.1,29.1
30	1565	1530	1581	1526	1554	1475	1526	1478	25- 30	405.1	1476	40.1,40.1
35	1337	1337	1331	1334	1327	1264	1260	1266	30- 35	418.2	1894	51.4,51.4
40	1055	1108	1082	1104	1040	1018	993.9	1020	35- 40	391.8	2286	62.1,62.1
45	746.1	838.0	832.1	835.8	728.4	762.9	727.8	774.2	40- 45	335.4	2621	71.2,71.2
50	475.1	615.2	695.9	614.7	464.8	558.2	607.7	576.6	45- 50	268.0	2890	78.4,78.4
55	320.8	450.5	559.8	446.5	320.2	399.4	487.7	421.0	50- 55	216.1	3106	84.3,84.3
60	254.0	363.1	423.7	361.9	256.4	319.0	367.6	336.2	55- 60	176.8	3282	89.1,89.1
65	193.3	281.5	345.2	285.1	195.6	266.3	292.1	278.3	60- 65	143.3	3426	93,93
70	129.8	210.9	266.8	212.8	129.9	214.8	216.6	225.7	65- 70	111.5	3537	96,96
75	67.68	166.1	188.3	166.4	69.65	156.1	141.1	167.3	70- 75	81.06	3618	98.2,98.2
80	40.88	110.2	0	109.4	44.57	89.84	0	97.69	75- 80	48.03	3666	99.5,99.5
85	23.71	0	0	0	25.27	0	0	0	80- 85	15.60	3682	100,100
90	0.4524	0	0	0	0.4991	0	0	0	85- 90	1.810	3684	100,100
95									90- 95			
100									95-100			
105									100-105			
110									105-110			
115									110-115			
120									115-120			
125									120-125			
130									125-130			
135									130-135			
140									135-140			
145									140-145			
150									145-150			
155									150-155			
160									155-160			
165									160-165			
170									165-170			
175									170-175			
180									175-180			
DEG	LUMINOUS INTENSITY:cd									UNIT:lm		



LUMINANCE cd/(m2)		
G(DEG)	C0/180	C90/270
85	946	0
80	819	0
75	910	2531
70	1320	2713
65	1591	2841
60	1767	2947
55	1945	3395
50	2571	3766
45	3670	4093

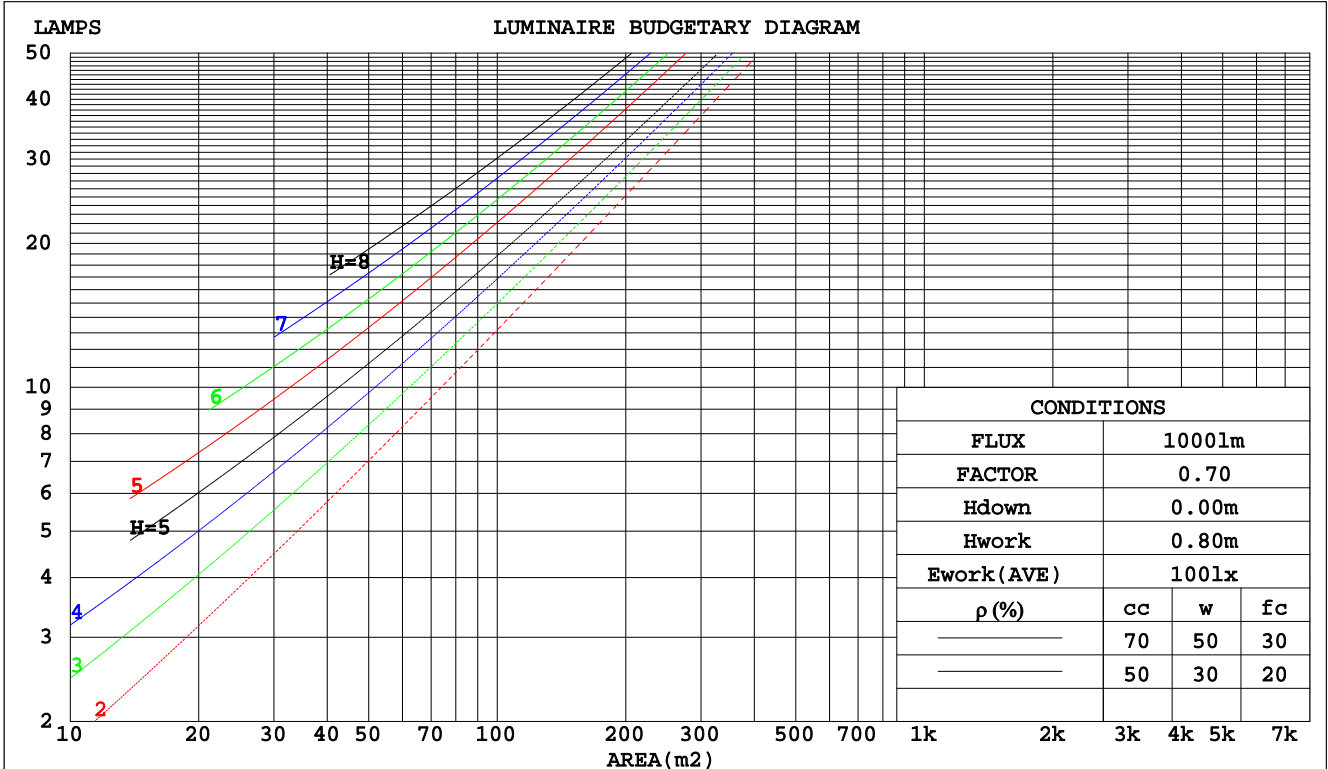
C Range: 0 - 360DEG
C Interval: 5.0DEG
Test Speed: HIGH
Temperature:25.3DEG
Operators:DAMIN
Test Date:2023-06-21

γ Range: 0 - 90DEG
γ Interval: 0.5DEG
Test System:EVERFINE GO-2000A_V1 SYSTEM V2.0.286
Humidity:65.0%
Test Distance:13.420m [K=1.0000]
Remarks: IL-PN195U(S) 3.500K 32W 3500K

CU AND LUMINAIRE BUDGETARY ESTIMATE DIAGRAM

Test:U:230.1V I:0.1318A P:29.76W PF:0.9813 Lamp Flux:3683.7x1 lm		
NAME: IL-PN195U(S) 3.500K	TYPE:	WEIGHT:
SPEC.:	DIM.:	SERIAL No.:
MFR.: EVERFINE	SUR.:250*1150	PROTECTION ANGLE:

pcc	80%			70%			50%			30%			10%			0
pw	50%	30%	10%	50%	30%	10%	50%	30%	10%	50%	30%	10%	50%	30%	10%	0
pfc	20%			20%			20%			20%			20%			0
RCR	RCR:Room Cavity Ratio						Coefficients of Utilization(CU)									
0.0	1.19	1.19	1.19	1.16	1.16	1.16	1.11	1.11	1.11	1.06	1.06	1.06	1.02	1.02	1.02	.00
1.0	1.07	1.03	1.00	1.05	1.02	.99	1.01	.98	.96	.97	.95	.93	.93	.92	.90	.88
2.0	.96	.90	.85	.94	.89	.84	.90	.86	.82	.87	.84	.80	.84	.81	.79	.77
3.0	.86	.79	.73	.84	.78	.73	.82	.76	.72	.79	.74	.70	.77	.73	.69	.67
4.0	.78	.70	.64	.76	.69	.64	.74	.68	.63	.72	.66	.62	.70	.65	.61	.59
5.0	.71	.63	.57	.69	.62	.57	.67	.61	.56	.66	.60	.55	.64	.59	.55	.53
6.0	.64	.56	.51	.63	.56	.51	.62	.55	.50	.60	.54	.50	.59	.53	.49	.48
7.0	.59	.51	.46	.58	.51	.46	.57	.50	.45	.55	.49	.45	.54	.49	.45	.43
8.0	.54	.47	.41	.54	.46	.41	.53	.46	.41	.51	.45	.41	.50	.45	.41	.39
9.0	.50	.43	.38	.50	.43	.38	.49	.42	.38	.48	.42	.37	.47	.41	.37	.36
10.0	.47	.40	.35	.46	.39	.35	.45	.39	.35	.45	.39	.34	.44	.38	.34	.33



C Range: 0 - 360DEG
 C Interval: 5.0DEG
 Test Speed: HIGH
 Temperature:25.3DEG
 Operators:DAMIN
 Test Date:2023-06-21

γ Range: 0 - 90DEG
 γ Interval: 0.5DEG
 Test System:EVERFINE GO-2000A_V1 SYSTEM V2.0.286
 Humidity:65.0%
 Test Distance:13.420m [K=1.0000]
 Remarks: IL-PN195U(S) 3.500K 32W 3500K

WEC AND CCEC

Test:U:230.1V I:0.1318A P:29.76W PF:0.9813 Lamp Flux:3683.7x1 lm		
NAME: IL-PN195U(S) 3.500K	TYPE:	WEIGHT:
SPEC.:	DIM.:	SERIAL No.:
MFR.: EVERFINE	SUR.:250*1150	PROTECTION ANGLE:

ρcc	80%			70%			50%			30%			10%			0
ρw	50%	30%	10%	50%	30%	10%	50%	30%	10%	50%	30%	10%	50%	30%	10%	0
ρfc	20%			20%			20%			20%			20%			0
RCR	RCR:Room Cavity Ratio						Wall Exitance Coefficients(WEC)									
0.0																
1.0	.251	.142	.045	.244	.139	.044	.231	.132	.042	.219	.126	.040	.208	.120	.039	
2.0	.241	.132	.041	.235	.130	.040	.224	.125	.039	.214	.120	.038	.204	.116	.036	
3.0	.228	.121	.036	.222	.119	.036	.213	.115	.035	.204	.112	.034	.195	.108	.033	
4.0	.214	.111	.033	.209	.109	.032	.200	.106	.032	.192	.103	.031	.185	.100	.031	
5.0	.200	.102	.030	.196	.101	.029	.189	.098	.029	.181	.096	.028	.175	.093	.028	
6.0	.188	.094	.027	.184	.093	.027	.178	.091	.026	.171	.089	.026	.165	.087	.026	
7.0	.177	.087	.025	.174	.087	.025	.168	.085	.024	.162	.083	.024	.157	.081	.024	
8.0	.167	.082	.023	.164	.081	.023	.159	.079	.023	.153	.078	.022	.149	.076	.022	
9.0	.158	.076	.021	.155	.076	.021	.150	.074	.021	.146	.073	.021	.141	.072	.021	
10.0	.149	.072	.020	.147	.071	.020	.143	.070	.020	.138	.069	.020	.135	.068	.019	

ρcc	80%			70%			50%			30%			10%			0
ρw	50%	30%	10%	50%	30%	10%	50%	30%	10%	50%	30%	10%	50%	30%	10%	0
ρfc	20%			20%			20%			20%			20%			0
RCR	RCR:Room Cavity Ratio						Ceiling Cavity Exitance Coefficients(CCEC)									
0.0	.190	.190	.190	.163	.163	.163	.111	.111	.111	.064	.064	.064	.020	.020	.020	
1.0	.176	.157	.139	.151	.134	.120	.103	.092	.083	.059	.054	.048	.019	.017	.016	
2.0	.166	.132	.104	.142	.114	.090	.097	.079	.063	.056	.046	.037	.018	.015	.012	
3.0	.156	.114	.080	.134	.098	.070	.092	.068	.049	.053	.040	.029	.017	.013	.009	
4.0	.148	.100	.064	.127	.087	.055	.087	.060	.039	.051	.035	.023	.016	.012	.008	
5.0	.141	.089	.052	.121	.077	.045	.083	.054	.032	.048	.032	.019	.016	.010	.006	
6.0	.134	.081	.043	.115	.070	.037	.079	.049	.026	.046	.029	.016	.015	.009	.005	
7.0	.127	.074	.036	.109	.064	.032	.076	.045	.022	.044	.026	.013	.014	.009	.004	
8.0	.121	.068	.031	.104	.059	.027	.072	.041	.019	.042	.024	.011	.014	.008	.004	
9.0	.116	.063	.027	.100	.055	.024	.069	.038	.017	.040	.023	.010	.013	.007	.003	
10.0	.110	.059	.024	.095	.051	.021	.066	.036	.015	.039	.021	.009	.012	.007	.003	

C Range: 0 - 360DEG
 C Interval: 5.0DEG
 Test Speed: HIGH
 Temperature:25.3DEG
 Operators:DAMIN
 Test Date:2023-06-21

γ Range: 0 - 90DEG
 γ Interval: 0.5DEG
 Test System:EVERFINE GO-2000A_V1 SYSTEM V2.0.286
 Humidity:65.0%
 Test Distance:13.420m [K=1.0000]
 Remarks: IL-PN195U(S) 3.500K 32W 3500K

UGR(Unified Glare Rating) Table

Test:U:230.1V I:0.1318A P:29.76W PF:0.9813 Lamp Flux:3683.7x1 lm										
NAME: IL-PN195U(S) 3.500K					TYPE:			WEIGHT:		
SPEC.:					DIM.:			SERIAL No.:		
MFR.: EVERFINE					SUR.:250*1150			PROTECTION ANGLE:		
ceiling/cavity	0.7	0.7	0.5	0.5	0.3	0.7	0.7	0.5	0.5	0.3
walls	0.5	0.3	0.5	0.3	0.3	0.5	0.3	0.5	0.3	0.3
working plane	0.2	0.2	0.2	0.2	0.2	0.2	0.2	0.2	0.2	0.2
Room dimensions	Viewed crosswise					Viewed endwise				
x = 2H y = 2H	15.2	16.6	15.5	16.7	16.9	16.2	17.5	16.4	17.7	17.9
3H	15.9	17.1	16.1	17.3	17.5	17.3	18.5	17.5	18.7	18.9
4H	16.0	17.2	16.3	17.4	17.7	17.8	18.9	18.1	19.2	19.4
6H	16.1	17.2	16.4	17.4	17.7	17.8	18.9	18.1	19.2	19.4
8H	16.1	17.2	16.5	17.4	17.7	17.8	18.8	18.1	19.1	19.4
12H	16.2	17.2	16.5	17.4	17.7	17.7	18.7	18.1	19.0	19.3
4H 2H	15.7	16.9	16.0	17.1	17.4	16.5	17.6	16.8	17.8	18.1
3H	16.7	17.7	17.1	18.0	18.3	17.6	18.6	18.0	18.9	19.2
4H	17.1	18.0	17.5	18.3	18.6	18.2	19.1	18.5	19.4	19.7
6H	17.4	18.2	17.8	18.5	18.9	18.2	19.0	18.6	19.4	19.7
8H	17.5	18.3	17.9	18.6	19.0	18.2	18.9	18.6	19.3	19.7
12H	17.6	18.3	18.0	18.7	19.1	18.1	18.8	18.6	19.2	19.6
8H 4H	17.4	18.1	17.8	18.5	18.9	18.3	19.1	18.7	19.4	19.8
6H	17.9	18.6	18.4	19.0	19.4	18.4	19.0	18.8	19.4	19.8
8H	18.2	18.8	18.7	19.2	19.6	18.4	18.9	18.8	19.3	19.8
12H	18.5	18.9	18.9	19.4	19.9	18.3	18.8	18.8	19.2	19.7
12H 4H	17.4	18.0	17.8	18.4	18.8	18.3	19.0	18.7	19.4	19.8
6H	17.9	18.5	18.4	18.9	19.3	18.4	19.0	18.9	19.4	19.8
8H	18.2	18.7	18.7	19.1	19.6	18.4	18.8	18.9	19.3	19.8
Variations with the observer position at spacings:										
S = 1.0H	+ 0.5 / - 0.6					+ 0.4 / - 0.5				
1.5H	+ 0.5 / - 0.6					+ 0.4 / - 0.4				
2.0H	+ 0.7 / - 1.1					+ 0.9 / - 1.1				

CIE Pub.117 Corrected 3684 lm Total Lamp Luminous Flux.(8log(F/F0) = 4.5)

C Range: 0 - 360DEG
 C Interval: 5.0DEG
 Test Speed: HIGH
 Temperature:25.3DEG
 Operators:DAMIN
 Test Date:2023-06-21

γ Range: 0 - 90DEG
 γ Interval: 0.5DEG
 Test System:EVERFINE GO-2000A_V1 SYSTEM V2.0.286
 Humidity:65.0%
 Test Distance:13.420m [K=1.0000]
 Remarks: IL-PN195U(S) 3.500K 32W 3500K

UTILIZATION FACTORS TABLE

Test:U:230.1V I:0.1318A P:29.76W PF:0.9813 Lamp Flux:3683.7x1 lm		
NAME: IL-PN195U(S) 3.500K	TYPE:	WEIGHT:
SPEC.:	DIM.:	SERIAL No.:
MFR.: EVERFINE	SUR.:250*1150	PROTECTION ANGLE:

REFLECTANCE										
Ceiling	0.8	0.8	0.8	0.7	0.7	0.7	0.5	0.5	0.5	0
Walls	0.7	0.5	0.3	0.7	0.5	0.3	0.7	0.5	0.3	0
Working plane	0.2	0.2	0.2	0.2	0.2	0.2	0.2	0.2	0.2	0
ROOM INDEX	UTILIZATION FACTORS(PERCENT) $k(RI) \times RCR = 5$									
k = 0.60	68	58	52	67	58	52	66	57	52	47
0.80	77	68	62	77	68	62	75	67	61	56
1.00	85	76	70	84	75	70	82	76	69	63
1.25	91	83	77	90	82	77	87	81	76	70
1.50	95	87	82	94	87	81	91	85	80	74
2.00	101	94	89	99	93	88	96	91	87	80
2.50	104	98	93	102	96	92	98	94	90	83
3.00	106	101	97	104	99	96	101	97	93	86
4.00	109	105	101	107	103	100	103	100	97	89
5.00	111	108	104	109	106	103	105	102	100	91
ROOM INDEX	UF(total)									Direct
According to DIN EN 13032-2 2004			Suspended				SHRNOM = 1.25			

C Range: 0 - 360DEG
 C Interval: 5.0DEG
 Test Speed: HIGH
 Temperature:25.3DEG
 Operators:DAMIN
 Test Date:2023-06-21

γ Range: 0 - 90DEG
 γ Interval: 0.5DEG
 Test System:EVERFINE GO-2000A_V1 SYSTEM V2.0.286
 Humidity:65.0%
 Test Distance:13.420m [K=1.0000]
 Remarks: IL-PN195U(S) 3.500K 32W 3500K

ISOCANDELA DIAGRAM

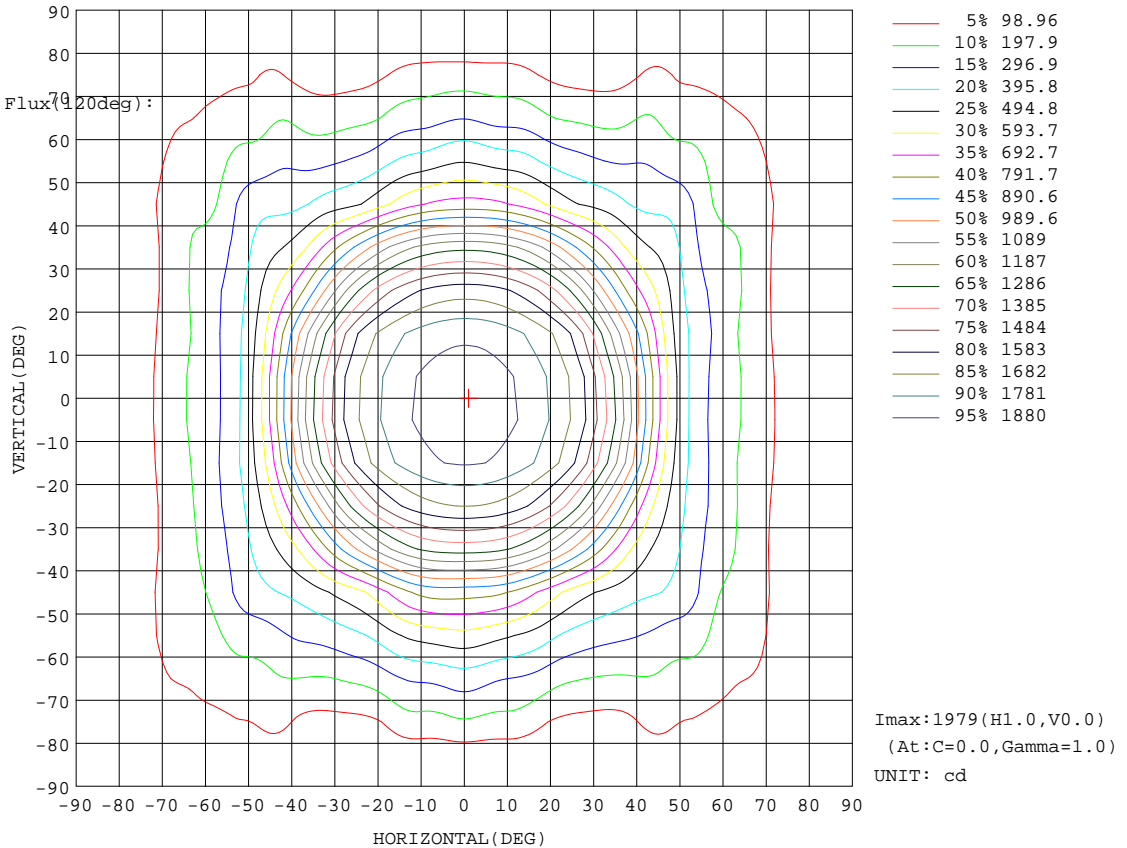
Test:U:230.1V I:0.1318A P:29.76W PF:0.9813 Lamp Flux:3683.7x1 lm		
NAME: IL-PN195U(S) 3.500K	TYPE:	WEIGHT:
SPEC.:	DIM.:	SERIAL No.:
MFR.: EVERFINE	SUR.:250*1150	PROTECTION ANGLE:

Conical surface Flux(90deg):

2621.5 lm
%lum = 71.2%
%lamp = 71.2%

Conical surface Flux(70deg):

3282.5 lm
%lum = 89.1%
%lamp = 89.1%

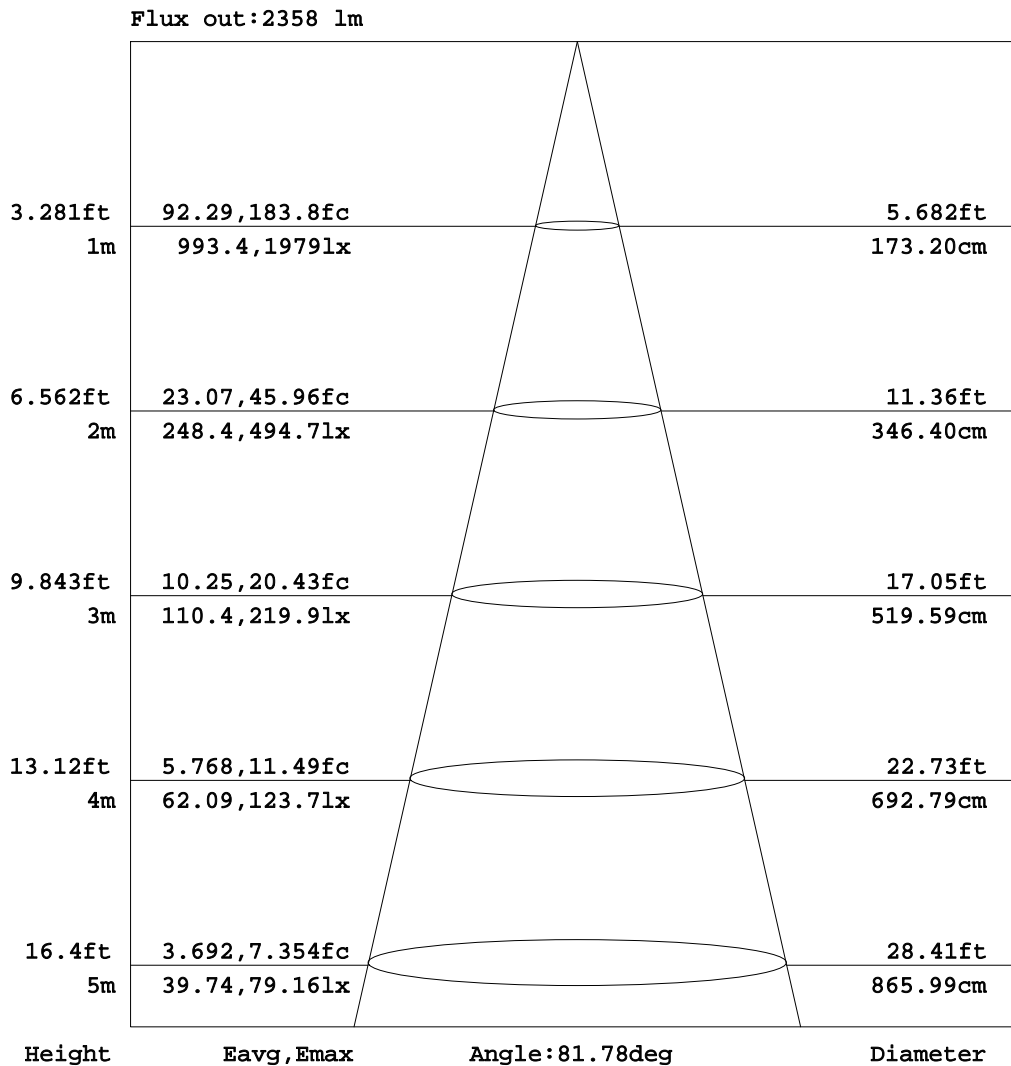


C Range: 0 - 360DEG
C Interval: 5.0DEG
Test Speed: HIGH
Temperature:25.3DEG
Operators:DAMIN
Test Date:2023-06-21

γ Range: 0 - 90DEG
γ Interval: 0.5DEG
Test System:EVERFINE GO-2000A_V1 SYSTEM V2.0.286
Humidity:65.0%
Test Distance:13.420m [K=1.0000]
Remarks: IL-PN195U(S) 3.500K 32W 3500K

AAI Figure

Test:U:230.1V I:0.1318A P:29.76W PF:0.9813 Lamp Flux:3683.7x1 lm		
NAME: IL-PN195U(S) 3.500K	TYPE:	WEIGHT:
SPEC.:	DIM.:	SERIAL No.:
MFR.: EVERFINE	SUR.:250*1150	PROTECTION ANGLE:



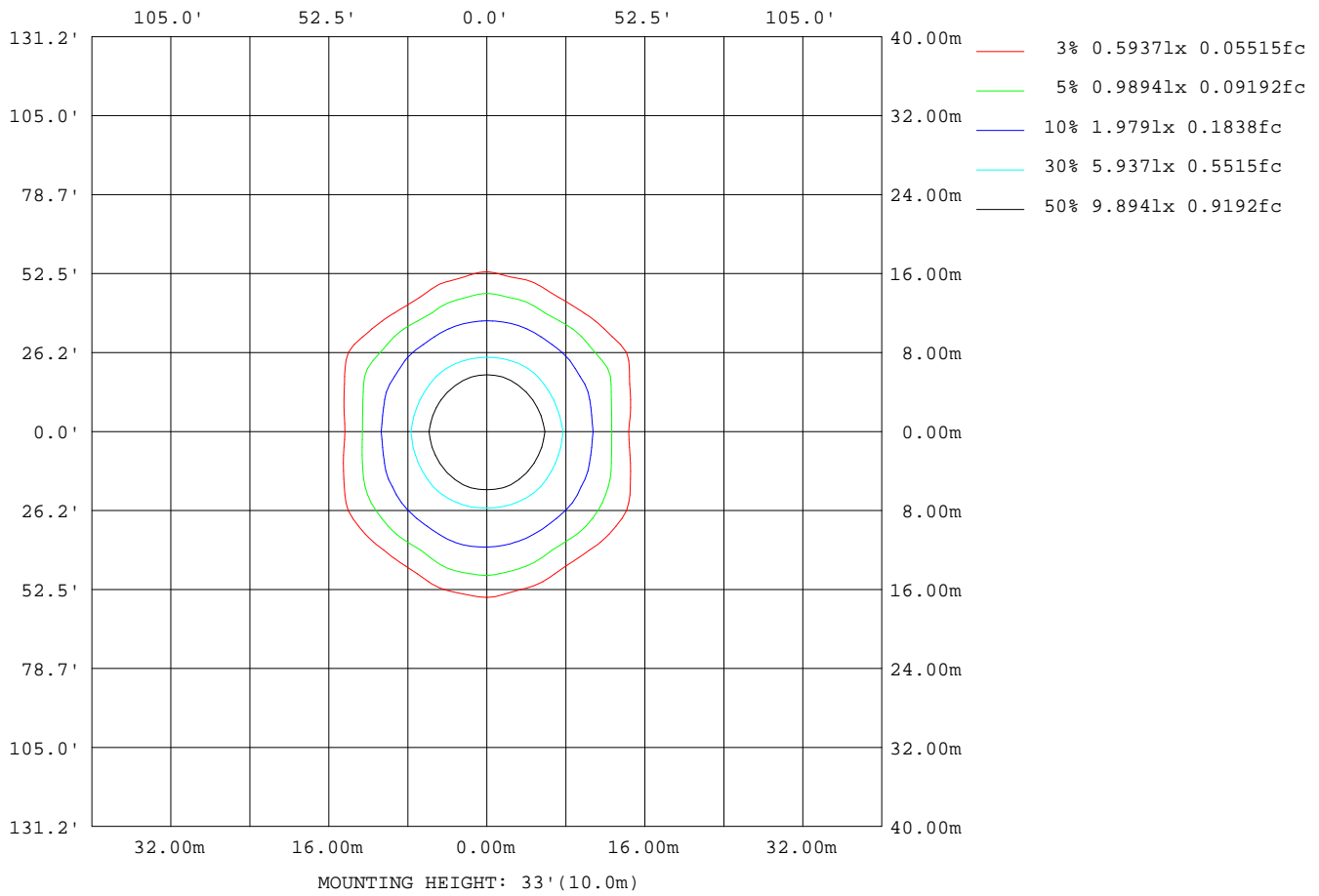
Note:The Curves indicate the illuminated area and the average illumination when the luminaire is at different distance.

C Range: 0 - 360DEG
 C Interval: 5.0DEG
 Test Speed: HIGH
 Temperature:25.3DEG
 Operators:DAMIN
 Test Date:2023-06-21

γ Range: 0 - 90DEG
 γ Interval: 0.5DEG
 Test System:EVERFINE GO-2000A_V1 SYSTEM V2.0.286
 Humidity:65.0%
 Test Distance:13.420m [K=1.0000]
 Remarks: IL-PN195U(S) 3.500K 32W 3500K

ISOLUX DIAGRAM

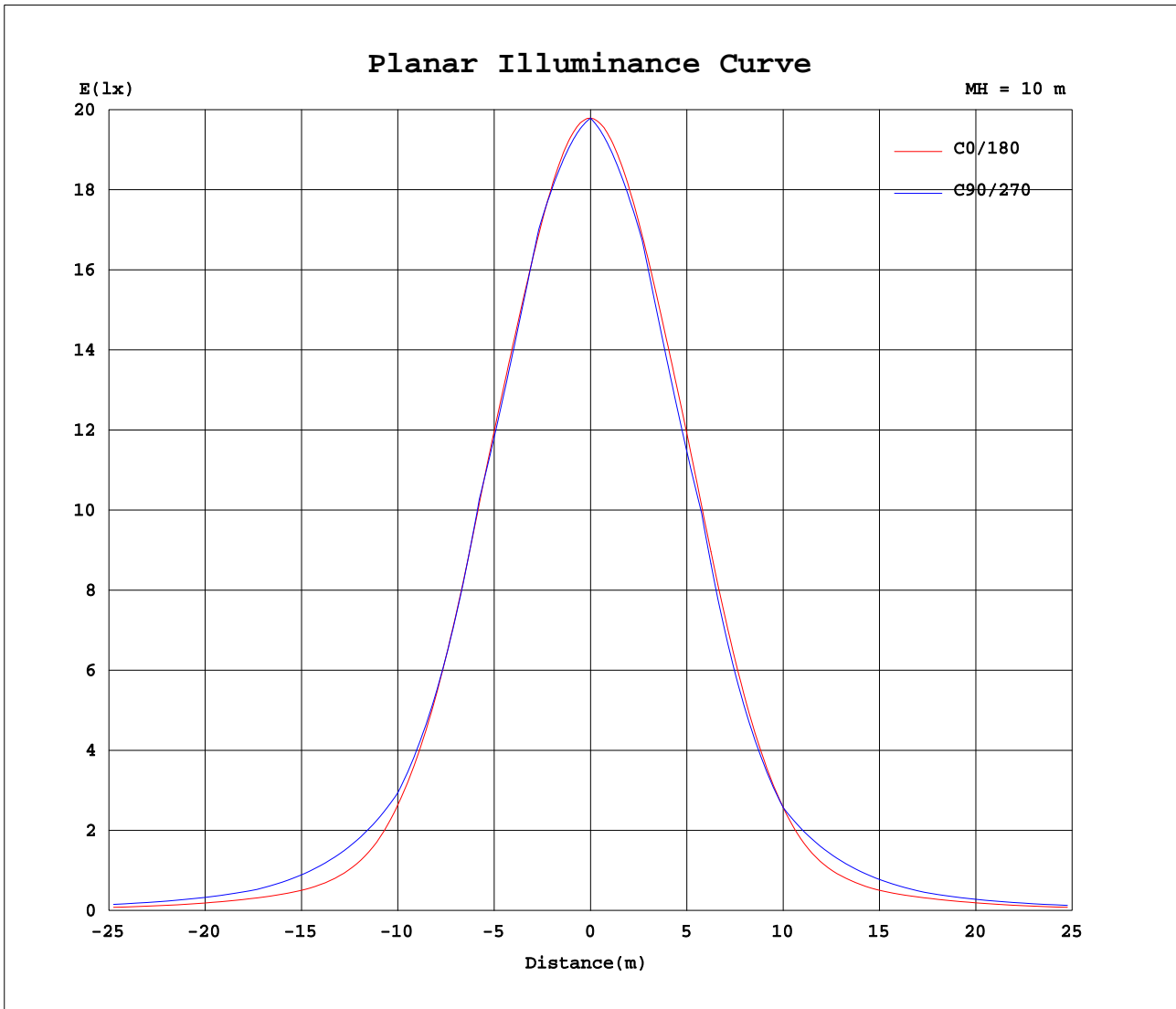
Test:U:230.1V I:0.1318A P:29.76W PF:0.9813 Lamp Flux:3683.7x1 lm		
NAME: IL-PN195U(S) 3.500K	TYPE:	WEIGHT:
SPEC.:	DIM.:	SERIAL No.:
MFR.: EVERFINE	SUR.:250*1150	PROTECTION ANGLE:



C Range: 0 - 360DEG
 C Interval: 5.0DEG
 Test Speed: HIGH
 Temperature:25.3DEG
 Operators:DAMIN
 Test Date:2023-06-21

γ Range: 0 - 90DEG
 γ Interval: 0.5DEG
 Test System:EVERFINE GO-2000A_V1 SYSTEM V2.0.286
 Humidity:65.0%
 Test Distance:13.420m [K=1.0000]
 Remarks: IL-PN195U(S) 3.500K 32W 3500K

Planar Illuminance Curve



C Range: 0 - 360DEG
 C Interval: 5.0DEG
 Test Speed: HIGH
 Temperature: 25.3DEG
 Operators: DAMIN
 Test Date: 2023-06-21

γ Range: 0 - 90DEG
 γ Interval: 0.5DEG
 Test System: EVERFINE GO-2000A_V1 SYSTEM V2.0.286
 Humidity: 65.0%
 Test Distance: 13.420m [K=1.0000]
 Remarks: IL-PN195U(S) 3.500K 32W 3500K

LUMINOUS DISTRIBUTION INTENSITY DATA

Test:U:230.1V I:0.1318A P:29.76W PF:0.9813 Lamp Flux:3683.7x1 lm		
NAME: IL-PN195U(S) 3.500K	TYPE:	WEIGHT:
SPEC.:	DIM.:	SERIAL No.:
MFR.: EVERFINE	SUR.:250*1150	PROTECTION ANGLE:

Table--1

UNIT: cd

C(DEG) γ (DEG)	0	5	10	15	20	25	30	35	40	45	50	55	60	65	70	75	80	85	90
0	1979	1979	1979	1979	1979	1979	1979	1979	1979	1979	1979	1979	1979	1979	1979	1979	1979	1979	1979
5	1967	1965	1962	1960	1959	1957	1956	1955	1953	1953	1952	1951	1951	1950	1950	1950	1950	1949	1949
10	1932	1927	1923	1920	1918	1916	1915	1915	1915	1915	1915	1916	1917	1917	1918	1919	1919	1920	1919
15	1876	1869	1865	1861	1860	1859	1860	1862	1864	1868	1871	1875	1879	1882	1884	1887	1888	1889	1890
20	1802	1794	1788	1785	1784	1786	1790	1796	1804	1812	1811	1804	1798	1795	1792	1790	1788	1787	1787
25	1709	1695	1686	1682	1684	1692	1703	1716	1700	1689	1684	1682	1682	1682	1683	1684	1684	1684	1684
30	1565	1543	1530	1528	1535	1551	1552	1539	1532	1530	1534	1542	1553	1563	1571	1577	1580	1581	1581
35	1337	1313	1305	1310	1326	1328	1317	1316	1323	1337	1357	1382	1376	1367	1358	1348	1340	1333	1331
40	1055	1035	1036	1055	1073	1058	1054	1064	1086	1108	1105	1101	1097	1095	1094	1093	1089	1082	1082
45	746	730	738	768	780	786	790	805	828	838	833	825	821	821	826	835	837	831	832
50	475	475	491	519	547	564	576	600	616	615	596	568	577	607	638	663	679	688	696
55	321	331	354	379	412	443	461	471	468	451	444	441	450	474	501	517	529	547	560
60	254	255	269	294	323	364	394	400	377	363	351	341	338	347	371	377	380	404	424
65	193	185	200	234	246	283	327	307	292	281	265	249	245	248	275	296	304	326	345
70	130	127	136	169	186	195	232	216	198	211	193	176	170	172	194	225	236	249	267
75	67.7	70.9	83.0	122	143	140	163	160	156	166	128	103	96.8	96.9	114	152	169	174	188
80	40.9	46.2	62.0	81.8	99.8	96.2	101	105	110	110	53.1	27.9	20.5	15.3	12.3	9.87	5.02	1.29	0.00
85	23.7	29.8	41.2	54.1	56.7	23.8	0.00	0.00	0.00	0.00	0.00	0.00	0.00	0.00	0.00	0.00	0.00	0.00	0.00
90	0.45	0.00	0.00	0.00	0.00	0.00	0.00	0.00	0.00	0.00	0.00	0.00	0.00	0.00	0.00	0.00	0.00	0.00	0.00

C Range: 0 - 360DEG
 C Interval: 5.0DEG
 Test Speed: HIGH
 Temperature:25.3DEG
 Operators:DAMIN
 Test Date:2023-06-21

γ Range: 0 - 90DEG
 γ Interval: 0.5DEG
 Test System:EVERFINE GO-2000A_V1 SYSTEM V2.0.286
 Humidity:65.0%
 Test Distance:13.420m [K=1.0000]
 Remarks: IL-PN195U(S) 3.500K 32W 3500K

LUMINOUS DISTRIBUTION INTENSITY DATA

Test:U:230.1V I:0.1318A P:29.76W PF:0.9813 Lamp Flux:3683.7x1 lm		
NAME: IL-PN195U(S) 3.500K	TYPE:	WEIGHT:
SPEC.:	DIM.:	SERIAL No.:
MFR.: EVERFINE	SUR.:250*1150	PROTECTION ANGLE:

Table--3

UNIT: cd

C(DEG) γ (DEG)	190	195	200	205	210	215	220	225	230	235	240	245	250	255	260	265	270	275	280
0	1979	1979	1979	1979	1979	1979	1979	1979	1979	1979	1979	1979	1979	1979	1979	1979	1979	1979	1979
5	1958	1955	1952	1950	1948	1946	1944	1943	1942	1941	1940	1939	1939	1939	1939	1938	1939	1939	1939
10	1916	1911	1907	1904	1901	1899	1898	1897	1896	1896	1896	1896	1897	1897	1898	1898	1899	1899	1899
15	1856	1850	1846	1844	1842	1842	1842	1844	1845	1847	1849	1851	1853	1855	1857	1858	1859	1858	1858
20	1778	1772	1769	1768	1769	1772	1777	1783	1778	1768	1760	1755	1751	1749	1748	1748	1748	1748	1749
25	1672	1665	1664	1669	1677	1687	1665	1649	1639	1633	1631	1631	1632	1634	1635	1636	1637	1637	1637
30	1507	1501	1505	1519	1517	1496	1482	1475	1475	1479	1487	1497	1507	1515	1521	1525	1526	1525	1523
35	1274	1270	1279	1277	1261	1255	1256	1264	1280	1302	1296	1287	1279	1272	1265	1261	1260	1263	1269
40	1002	1010	1017	998	989	990	1002	1018	1020	1017	1014	1009	1006	1002	998	994	994	997	1004
45	719	743	749	745	737	736	755	763	757	744	736	732	733	732	731	727	728	732	739
50	482	512	546	564	556	552	556	558	538	501	496	523	553	573	586	600	608	602	593
55	350	370	404	446	457	437	415	399	396	386	385	401	430	446	453	475	488	474	460
60	268	292	312	346	382	371	339	319	300	290	286	287	311	323	321	349	368	345	328
65	204	239	236	253	302	293	281	266	220	196	200	202	227	252	256	278	292	274	261
70	138	179	185	174	209	206	194	215	169	139	137	140	161	190	198	210	217	205	200
75	83.2	132	148	136	147	149	139	156	116	84.7	76.5	78.5	97.1	127	139	142	141	137	138
80	64.2	78.9	91.3	87.9	89.1	89.0	90.3	89.8	46.2	24.5	16.1	12.3	10.5	8.23	4.12	1.06	0.00	1.02	4.09
85	34.4	44.7	46.1	19.2	0.00	0.00	0.00	0.00	0.00	0.00	0.00	0.00	0.00	0.00	0.00	0.00	0.00	0.00	0.00
90	0.00	0.00	0.00	0.00	0.00	0.00	0.00	0.00	0.00	0.00	0.00	0.00	0.00	0.00	0.00	0.00	0.00	0.00	0.00

C Range: 0 - 360DEG
 C Interval: 5.0DEG
 Test Speed: HIGH
 Temperature:25.3DEG
 Operators:DAMIN
 Test Date:2023-06-21

γ Range: 0 - 90DEG
 γ Interval: 0.5DEG
 Test System:EVERFINE GO-2000A_V1 SYSTEM V2.0.286
 Humidity:65.0%
 Test Distance:13.420m [K=1.0000]
 Remarks: IL-PN195U(S) 3.500K 32W 3500K

LUMINOUS DISTRIBUTION INTENSITY DATA

Test:U:230.1V I:0.1318A P:29.76W PF:0.9813 Lamp Flux:3683.7x1 lm		
NAME: IL-PN195U(S) 3.500K	TYPE:	WEIGHT:
SPEC.:	DIM.:	SERIAL No.:
MFR.: EVERFINE	SUR.:250*1150	PROTECTION ANGLE:

Table--4

UNIT: cd

C(DEG) γ (DEG)	285	290	295	300	305	310	315	320	325	330	335	340	345	350	355				
0	1979	1979	1979	1979	1979	1979	1979	1979	1979	1979	1979	1979	1979	1979	1979				
5	1940	1940	1941	1942	1943	1944	1945	1947	1949	1951	1953	1955	1958	1961	1964				
10	1899	1899	1899	1899	1899	1900	1900	1901	1903	1905	1908	1911	1915	1920	1925				
15	1857	1856	1854	1852	1850	1848	1846	1845	1844	1845	1846	1849	1853	1859	1867				
20	1752	1754	1757	1763	1770	1780	1783	1777	1773	1771	1769	1771	1774	1781	1790				
25	1636	1635	1635	1635	1637	1641	1651	1666	1687	1677	1670	1667	1669	1676	1690				
30	1518	1512	1503	1493	1485	1479	1478	1484	1497	1517	1519	1506	1503	1512	1533				
35	1278	1286	1296	1305	1309	1284	1266	1256	1254	1258	1269	1269	1263	1273	1298				
40	1010	1016	1022	1027	1029	1026	1020	1005	993	990	997	1014	1013	1012	1024				
45	743	746	750	755	761	770	774	769	755	751	759	766	762	737	730				
50	585	569	544	521	525	558	577	577	570	572	580	560	522	491	475				
55	460	444	421	409	410	417	421	431	447	468	462	413	377	361	335				
60	338	322	306	308	313	322	336	347	373	389	349	308	293	277	259				
65	261	235	219	220	219	239	278	290	298	306	257	236	247	209	187				
70	192	164	150	151	154	181	226	207	209	218	180	178	184	147	122				
75	123	95.6	81.7	82.7	91.4	124	167	147	154	161	147	148	134	87.4	67.8				
80	7.94	10.3	12.6	17.1	25.7	50.4	97.7	94.9	94.4	96.8	96.4	95.2	81.2	62.1	44.4				
85	0.00	0.00	0.00	0.00	0.00	0.00	0.00	0.00	0.00	0.00	19.8	45.8	45.6	37.9	29.0				
90	0.00	0.00	0.00	0.00	0.00	0.00	0.00	0.00	0.00	0.00	0.00	0.00	0.00	0.00	0.00				

C Range: 0 - 360DEG
 C Interval: 5.0DEG
 Test Speed: HIGH
 Temperature:25.3DEG
 Operators:DAMIN
 Test Date:2023-06-21

γ Range: 0 - 90DEG
 γ Interval: 0.5DEG
 Test System:EVERFINE GO-2000A_V1 SYSTEM V2.0.286
 Humidity:65.0%
 Test Distance:13.420m [K=1.0000]
 Remarks: IL-PN195U(S) 3.500K 32W 3500K

Photometric Data Table [cd]

G/C	0.0	5.0	10.0	15.0	20.0	25.0	30.0	35.0	40.0	45.0
0.0	1979	1979	1979	1979	1979	1979	1979	1979	1979	1979
2.5	1976	1975	1974	1973	1972	1970	1970	1969	1968	1967
5.0	1967	1965	1962	1960	1959	1957	1956	1955	1953	1953
7.5	1953	1949	1946	1943	1941	1939	1938	1936	1935	1935
10.0	1932	1927	1923	1920	1918	1916	1915	1915	1915	1915
12.5	1906	1901	1896	1893	1891	1890	1889	1890	1891	1892
15.0	1876	1869	1865	1861	1860	1859	1860	1862	1864	1868
17.5	1841	1834	1829	1826	1824	1825	1827	1831	1836	1841
20.0	1802	1794	1788	1785	1784	1786	1790	1796	1804	1812
22.5	1759	1749	1742	1739	1739	1743	1750	1758	1769	1758
25.0	1709	1695	1686	1682	1684	1692	1703	1716	1700	1689
27.5	1648	1629	1618	1614	1617	1628	1645	1634	1621	1614
30.0	1565	1543	1530	1528	1535	1551	1552	1539	1532	1530
32.5	1458	1434	1423	1424	1435	1456	1440	1432	1432	1438
35.0	1337	1313	1305	1310	1326	1328	1317	1316	1323	1337
37.5	1203	1181	1177	1188	1211	1195	1187	1192	1207	1230
40.0	1055	1035	1036	1055	1073	1058	1054	1064	1086	1108
42.5	901.5	882.1	886.6	913.4	924.8	919.3	921.0	932.9	957.8	967.6
45.0	746.1	730.1	738.2	768.3	779.7	785.6	790.2	804.7	827.8	838.0
47.5	597.2	588.8	601.9	630.6	649.9	663.9	671.9	692.3	713.4	719.8
50.0	475.1	475.1	491.1	519.5	546.5	564.2	575.6	599.6	616.0	615.2
52.5	385.4	391.9	411.8	438.6	470.2	492.3	509.3	526.7	534.4	524.6
55.0	320.8	330.9	354.2	378.7	412.3	442.9	461.1	470.6	468.5	450.5
57.5	281.4	287.5	305.9	330.5	363.4	402.2	424.5	430.1	417.3	405.9
60.0	254.0	254.9	268.9	293.8	322.9	363.7	394.1	400.2	376.8	363.1
62.5	224.9	221.0	235.0	264.4	285.5	325.0	369.9	355.1	335.6	321.9
65.0	193.3	185.4	199.7	234.4	246.5	282.5	327.1	306.7	291.5	281.5
67.5	161.4	154.4	166.4	198.3	210.8	235.3	276.3	259.8	243.8	240.9
70.0	129.8	126.9	136.4	169.1	186.2	195.0	232.2	216.0	197.8	210.9
72.5	94.59	97.69	106.2	145.6	167.7	165.6	196.1	182.2	177.3	186.5
75.0	67.68	70.86	82.96	122.3	143.4	140.4	162.8	159.7	156.4	166.1
77.5	50.86	54.57	69.34	97.95	120.0	116.5	129.3	133.9	134.1	148.2
80.0	40.88	46.23	62.01	81.80	99.84	96.16	100.6	105.2	110.2	110.2
82.5	33.62	41.60	52.42	67.94	80.66	77.86	73.02	52.20	33.07	15.17
85.0	23.71	29.81	41.20	54.08	56.75	23.76	0	0	0	0
87.5	4.966	13.08	23.40	0	0	0	0	0	0	0
90.0	0.4524	0	0	0	0	0	0	0	0	0
G/C	50.0	55.0	60.0	65.0	70.0	75.0	80.0	85.0	90.0	95.0
0.0	1979	1979	1979	1979	1979	1979	1979	1979	1979	1979
2.5	1967	1966	1966	1965	1965	1965	1964	1964	1964	1964
5.0	1952	1951	1951	1950	1950	1950	1950	1949	1949	1949
7.5	1934	1934	1934	1934	1934	1934	1934	1934	1934	1934
10.0	1915	1916	1917	1917	1918	1919	1919	1920	1919	1919
12.5	1895	1896	1898	1900	1901	1903	1904	1905	1905	1904
15.0	1871	1875	1879	1882	1884	1887	1888	1889	1890	1889
17.5	1846	1852	1854	1849	1845	1842	1840	1839	1838	1838
20.0	1811	1804	1798	1795	1792	1790	1788	1787	1787	1787
22.5	1750	1745	1741	1739	1738	1737	1736	1736	1735	1735
25.0	1684	1682	1682	1682	1683	1684	1684	1684	1684	1683
27.5	1612	1614	1619	1624	1627	1631	1632	1633	1632	1632
30.0	1534	1542	1553	1563	1571	1577	1580	1581	1581	1580
32.5	1449	1465	1483	1500	1487	1476	1465	1458	1456	1459
35.0	1357	1382	1376	1367	1358	1348	1340	1333	1331	1335
37.5	1250	1243	1237	1231	1227	1221	1214	1208	1207	1212
40.0	1105	1101	1097	1095	1094	1093	1089	1082	1082	1088
42.5	965.8	961.9	958.3	957.5	960.7	964.6	962.8	956.8	956.9	965.1
45.0	833.4	825.2	821.2	820.6	826.4	835.2	836.9	831.4	832.1	842.2
47.5	709.6	693.5	686.3	684.3	709.5	738.3	753.2	758.8	764.0	769.1
50.0	596.3	568.5	576.9	606.9	638.2	663.2	678.5	688.3	695.9	697.9
52.5	494.1	494.8	511.9	539.6	568.8	589.5	603.7	617.6	627.9	626.4
55.0	443.7	441.1	450.5	473.8	501.3	517.2	528.9	546.7	559.8	554.7
57.5	396.3	390.2	392.8	409.5	435.3	446.2	454.3	475.4	491.8	482.6
60.0	350.9	341.1	338.5	347.2	370.7	376.7	379.8	403.9	423.7	410.3
62.5	307.3	293.8	286.7	287.7	316.0	330.5	338.8	364.0	384.5	369.2
65.0	265.3	249.1	244.5	248.4	275.3	295.7	304.2	325.6	345.2	329.4
67.5	227.4	212.7	207.3	209.7	234.4	260.4	270.0	287.4	306.0	289.7
70.0	192.8	176.1	170.2	171.8	193.9	224.7	236.1	249.4	266.8	250.0
72.5	159.6	139.5	133.5	134.2	153.6	188.6	202.4	211.6	227.6	210.3
75.0	127.9	103.0	96.79	96.87	113.9	152.3	168.9	173.9	188.3	170.7
77.5	97.75	66.39	59.63	57.36	65.00	84.31	89.24	88.04	94.17	86.38
80.0	53.08	27.92	20.53	15.35	12.29	9.869	5.020	1.293	0	1.268
82.5	0	0	0	0	0	0	0	0	0	0
85.0	0	0	0	0	0	0	0	0	0	0

C Range: 0 - 360DEG
 C Interval: 5.0DEG
 Test Speed: HIGH
 Temperature: 25.3DEG
 Operators: DAMIN
 Test Date: 2023-06-21

γ Range: 0 - 90DEG
 γ Interval: 0.5DEG
 Test System: EVERFINE GO-2000A_V1 SYSTEM V2.0.286
 Humidity: 65.0%
 Test Distance: 13.420m [K=1.0000]
 Remarks: IL-PN195U(S) 3.500K 32W 3500K

Photometric Data Table [cd]

87.5	0	0	0	0	0	0	0	0	0	0
90.0	0	0	0	0	0	0	0	0	0	0
G/C	100.0	105.0	110.0	115.0	120.0	125.0	130.0	135.0	140.0	145.0
0.0	1979	1979	1979	1979	1979	1979	1979	1979	1979	1979
2.5	1964	1964	1964	1964	1965	1965	1965	1966	1966	1967
5.0	1949	1949	1949	1949	1949	1949	1950	1950	1951	1952
7.5	1934	1933	1933	1933	1933	1932	1932	1932	1933	1933
10.0	1918	1917	1917	1916	1915	1914	1913	1912	1911	1911
12.5	1903	1902	1900	1898	1896	1894	1892	1890	1888	1887
15.0	1888	1886	1883	1880	1877	1873	1869	1865	1862	1859
17.5	1839	1841	1844	1847	1852	1850	1845	1839	1833	1828
20.0	1787	1788	1790	1793	1796	1802	1809	1810	1802	1794
22.5	1735	1735	1735	1737	1739	1742	1748	1756	1767	1756
25.0	1682	1681	1680	1679	1679	1679	1681	1687	1697	1712
27.5	1630	1627	1624	1620	1615	1612	1609	1611	1617	1628
30.0	1577	1573	1567	1559	1549	1539	1531	1526	1526	1532
32.5	1465	1474	1484	1496	1480	1462	1446	1434	1427	1427
35.0	1342	1352	1360	1367	1374	1380	1355	1334	1319	1311
37.5	1220	1229	1234	1236	1238	1242	1248	1226	1202	1186
40.0	1099	1106	1107	1103	1100	1101	1104	1104	1078	1055
42.5	977.0	982.4	978.3	968.5	961.9	961.7	966.3	964.2	948.2	925.1
45.0	855.6	858.3	847.8	833.4	824.1	826.2	835.9	835.8	820.8	798.6
47.5	772.5	763.6	732.7	697.9	688.1	697.1	714.4	718.7	708.0	688.8
50.0	697.7	688.3	659.2	618.1	579.0	575.9	603.7	614.7	610.4	598.4
52.5	622.9	614.4	587.7	548.5	516.3	504.5	503.4	522.9	528.4	525.6
55.0	547.9	541.5	518.0	481.8	457.6	451.5	450.0	446.5	461.4	467.6
57.5	473.2	469.8	449.9	418.0	402.5	399.7	399.9	402.1	408.5	422.4
60.0	398.6	399.3	383.2	357.3	350.0	349.1	353.4	361.9	369.4	386.3
62.5	354.7	350.4	326.3	299.8	299.8	299.8	311.0	323.6	327.7	342.0
65.0	316.5	312.3	283.0	258.2	254.9	253.4	272.1	285.1	282.4	296.4
67.5	278.6	274.1	239.9	216.9	214.9	215.8	235.8	245.0	234.4	252.1
70.0	241.0	235.7	197.1	176.4	175.5	178.9	200.3	212.8	189.6	211.0
72.5	203.5	196.8	154.6	136.2	136.8	142.1	165.3	187.2	169.5	179.5
75.0	166.2	157.9	112.8	96.26	98.59	105.3	131.8	166.4	149.0	157.2
77.5	87.62	87.27	63.67	55.92	60.34	68.22	99.87	148.1	127.3	131.7
80.0	4.931	10.22	12.02	14.99	20.80	28.72	54.17	109.4	104.4	104.1
82.5	0	0	0	0	0	0	0	14.89	31.67	52.08
85.0	0	0	0	0	0	0	0	0	0	0
87.5	0	0	0	0	0	0	0	0	0	0
90.0	0	0	0	0	0	0	0	0	0	0
G/C	150.0	155.0	160.0	165.0	170.0	175.0	180.0	185.0	190.0	195.0
0.0	1979	1979	1979	1979	1979	1979	1979	1979	1979	1979
2.5	1968	1969	1970	1971	1972	1973	1974	1972	1971	1969
5.0	1953	1954	1956	1958	1959	1962	1964	1961	1958	1955
7.5	1934	1935	1937	1939	1942	1945	1948	1943	1939	1935
10.0	1912	1913	1914	1917	1920	1923	1928	1921	1916	1911
12.5	1886	1886	1887	1889	1892	1897	1902	1894	1888	1883
15.0	1857	1856	1856	1858	1861	1866	1872	1863	1856	1850
17.5	1825	1822	1821	1823	1826	1831	1838	1828	1820	1814
20.0	1788	1784	1781	1781	1784	1790	1798	1786	1778	1772
22.5	1746	1738	1734	1733	1736	1743	1754	1740	1730	1724
25.0	1697	1685	1677	1675	1679	1688	1703	1685	1672	1665
27.5	1637	1621	1610	1607	1610	1621	1639	1615	1600	1593
30.0	1546	1544	1529	1521	1522	1533	1554	1526	1507	1501
32.5	1435	1453	1432	1419	1416	1425	1448	1416	1397	1390
35.0	1313	1325	1322	1304	1297	1304	1327	1293	1274	1270
37.5	1181	1190	1206	1179	1167	1169	1190	1157	1142	1142
40.0	1047	1052	1066	1044	1023	1020	1040	1011	1002	1010
42.5	914.9	914.1	915.3	900.7	872.7	866.6	884.3	861.3	859.5	875.1
45.0	787.9	781.8	772.6	754.6	721.7	713.7	728.4	712.8	718.7	743.2
47.5	674.0	665.3	643.9	619.8	591.2	576.9	582.6	575.3	589.0	618.0
50.0	582.7	569.4	545.0	516.0	488.2	469.1	464.8	465.1	481.5	512.0
52.5	515.2	499.0	468.5	438.2	413.7	390.8	382.4	386.6	404.6	430.3
55.0	462.1	441.8	406.9	377.6	355.7	332.2	320.2	330.1	350.5	370.5
57.5	418.7	392.7	355.8	328.2	308.4	288.9	282.0	287.5	305.3	324.8
60.0	383.6	352.0	315.1	289.5	269.0	256.6	256.4	255.3	268.3	291.6
62.5	355.2	312.3	278.4	254.6	232.1	223.6	229.2	222.6	235.6	265.1
65.0	312.7	272.8	241.1	218.0	195.8	188.6	195.6	187.2	203.7	238.7
67.5	264.2	232.9	208.0	185.0	165.1	157.1	162.5	153.8	171.0	207.5
70.0	222.0	198.5	184.1	162.7	137.2	127.2	129.9	123.5	137.6	178.8
72.5	187.6	173.3	164.5	145.5	107.6	96.73	95.71	93.74	105.5	154.0
75.0	158.0	151.3	143.6	129.2	86.57	72.52	69.65	70.05	83.17	131.8
77.5	129.1	126.1	125.7	108.6	74.80	58.85	52.98	55.11	70.97	101.2

C Range: 0 - 360DEG
 C Interval: 5.0DEG
 Test Speed: HIGH
 Temperature: 25.3DEG
 Operators: DAMIN
 Test Date: 2023-06-21

γ Range: 0 - 90DEG
 γ Interval: 0.5DEG
 Test System: EVERFINE GO-2000A_V1 SYSTEM V2.0.286
 Humidity: 65.0%
 Test Distance: 13.420m [K=1.0000]
 Remarks: IL-PN195U(S) 3.500K 32W 3500K

Photometric Data Table [cd]

80.0	102.2	101.1	107.2	93.18	66.99	53.57	44.57	47.55	64.23	78.89
82.5	73.65	79.52	84.49	76.29	56.61	45.14	37.59	39.46	49.86	61.89
85.0	0	24.03	55.76	55.38	43.87	28.92	25.27	26.56	34.36	44.67
87.5	0	0	0	0	24.49	13.70	6.190	9.507	18.14	0
90.0	0	0	0	0	0	0	0.4991	0	0	0
G/C	200.0	205.0	210.0	215.0	220.0	225.0	230.0	235.0	240.0	245.0
0.0	1979	1979	1979	1979	1979	1979	1979	1979	1979	1979
2.5	1968	1966	1965	1964	1963	1962	1961	1961	1960	1960
5.0	1952	1950	1948	1946	1944	1943	1942	1941	1940	1939
7.5	1932	1929	1926	1924	1922	1921	1920	1919	1919	1918
10.0	1907	1904	1901	1899	1898	1897	1896	1896	1896	1896
12.5	1879	1876	1874	1872	1871	1871	1872	1872	1873	1874
15.0	1846	1844	1842	1842	1842	1844	1845	1847	1849	1851
17.5	1810	1808	1807	1809	1811	1814	1817	1821	1820	1814
20.0	1769	1768	1769	1772	1777	1783	1778	1768	1760	1755
22.5	1721	1722	1726	1732	1740	1724	1711	1703	1697	1694
25.0	1664	1669	1677	1687	1665	1649	1639	1633	1631	1631
27.5	1594	1602	1616	1599	1579	1567	1560	1559	1561	1565
30.0	1505	1519	1517	1496	1482	1475	1475	1479	1487	1497
32.5	1397	1416	1395	1381	1374	1374	1381	1394	1409	1426
35.0	1279	1277	1261	1255	1256	1264	1280	1302	1296	1287
37.5	1157	1137	1125	1123	1130	1147	1164	1161	1155	1148
40.0	1017	998.4	989.3	990.3	1002	1018	1020	1017	1014	1009
42.5	877.6	865.5	857.8	860.8	874.0	884.2	883.9	877.9	873.9	870.4
45.0	749.5	745.0	737.0	735.9	754.9	762.9	756.7	744.3	736.0	732.2
47.5	637.8	643.7	634.1	634.4	648.7	654.7	641.7	618.0	601.5	595.3
50.0	545.8	563.9	556.2	552.3	556.4	558.2	538.3	500.7	496.0	523.2
52.5	468.5	502.3	501.3	487.1	478.8	472.3	446.0	434.3	438.8	461.2
55.0	404.0	446.1	456.8	437.2	414.7	399.4	395.9	386.1	385.1	400.9
57.5	352.1	392.0	418.1	399.5	364.9	355.2	346.7	338.0	334.3	342.5
60.0	311.8	346.0	382.1	370.9	339.5	319.0	300.0	289.5	285.5	286.6
62.5	275.2	299.5	349.3	336.5	313.7	290.1	257.4	241.2	237.8	233.6
65.0	235.8	252.6	302.1	292.7	281.4	266.3	220.0	195.6	200.3	202.4
67.5	201.7	204.9	251.6	247.0	240.2	244.0	192.4	166.5	168.5	171.2
70.0	185.5	173.6	209.4	205.7	194.1	214.8	168.5	138.8	137.3	140.4
72.5	174.0	154.1	176.6	174.5	164.8	184.6	143.0	111.6	106.6	109.4
75.0	147.6	136.2	147.2	149.0	139.3	156.1	115.7	84.65	76.47	78.52
77.5	117.4	112.0	116.9	119.9	114.9	129.2	86.94	57.56	46.61	46.10
80.0	91.30	87.91	89.13	88.97	90.25	89.84	46.17	24.48	16.09	12.30
82.5	70.17	65.67	61.11	42.60	27.20	12.32	0	0	0	0
85.0	46.13	19.19	0	0	0	0	0	0	0	0
87.5	0	0	0	0	0	0	0	0	0	0
90.0	0	0	0	0	0	0	0	0	0	0
G/C	250.0	255.0	260.0	265.0	270.0	275.0	280.0	285.0	290.0	295.0
0.0	1979	1979	1979	1979	1979	1979	1979	1979	1979	1979
2.5	1959	1959	1959	1959	1959	1959	1959	1960	1960	1961
5.0	1939	1939	1939	1938	1939	1939	1939	1940	1940	1941
7.5	1918	1918	1918	1918	1919	1919	1919	1919	1920	1921
10.0	1897	1897	1898	1898	1899	1899	1899	1899	1899	1899
12.5	1875	1876	1877	1878	1879	1878	1878	1878	1878	1877
15.0	1853	1855	1857	1858	1859	1858	1858	1857	1856	1854
17.5	1809	1806	1804	1803	1803	1803	1806	1808	1811	1816
20.0	1751	1749	1748	1748	1748	1748	1749	1752	1754	1757
22.5	1692	1692	1691	1692	1692	1692	1693	1694	1695	1697
25.0	1632	1634	1635	1636	1637	1637	1637	1636	1635	1635
27.5	1570	1575	1578	1581	1582	1581	1580	1578	1574	1570
30.0	1507	1515	1521	1525	1526	1525	1523	1518	1512	1503
32.5	1416	1406	1399	1394	1393	1395	1402	1411	1421	1433
35.0	1279	1272	1265	1261	1260	1263	1269	1278	1286	1296
37.5	1143	1137	1132	1127	1127	1130	1136	1144	1152	1159
40.0	1006	1002	997.9	994.1	993.9	997.1	1004	1010	1016	1022
42.5	869.1	867.0	864.2	860.8	860.8	864.4	871.0	876.4	881.0	885.6
45.0	732.6	731.7	730.5	727.5	727.8	731.7	738.5	742.6	746.2	750.2
47.5	616.6	638.1	652.4	662.4	667.7	665.4	659.9	650.0	632.1	616.5
50.0	553.2	572.7	586.0	600.3	607.7	601.9	592.9	585.3	568.9	544.1
52.5	491.1	508.7	519.5	537.9	547.7	538.1	526.1	522.0	506.3	481.7
55.0	430.1	445.7	453.2	475.2	487.7	473.9	459.5	459.6	444.4	421.1
57.5	369.9	383.8	387.2	412.3	427.6	409.4	393.4	398.2	383.1	362.6
60.0	310.6	323.1	321.3	349.1	367.6	344.8	327.6	337.8	322.4	306.4
62.5	261.3	282.4	285.9	313.0	329.9	308.6	291.5	295.0	271.4	253.2
65.0	227.3	251.7	256.1	278.2	292.1	273.8	260.9	261.0	235.2	219.1
67.5	193.9	220.8	226.8	243.8	254.4	239.3	230.3	226.9	199.6	184.7
70.0	161.0	189.6	197.5	209.6	216.6	205.1	199.7	192.5	164.5	150.5

C Range: 0 - 360DEG
 C Interval: 5.0DEG
 Test Speed: HIGH
 Temperature: 25.3DEG
 Operators: DAMIN
 Test Date: 2023-06-21

γ Range: 0 - 90DEG
 γ Interval: 0.5DEG
 Test System: EVERFINE GO-2000A_V1 SYSTEM V2.0.286
 Humidity: 65.0%
 Test Distance: 13.420m [K=1.0000]
 Remarks: IL-PN195U(S) 3.500K 32W 3500K

Photometric Data Table [cd]

72.5	128.7	158.2	168.3	175.7	178.9	171.0	169.0	157.9	129.8	116.1
75.0	97.08	126.7	139.3	142.1	141.1	137.2	138.3	123.4	95.59	81.69
77.5	55.83	70.16	73.39	71.97	70.56	69.47	72.83	67.80	54.35	47.08
80.0	10.55	8.226	4.123	1.058	0	1.021	4.094	7.940	10.29	12.59
82.5	0	0	0	0	0	0	0	0	0	0
85.0	0	0	0	0	0	0	0	0	0	0
87.5	0	0	0	0	0	0	0	0	0	0
90.0	0	0	0	0	0	0	0	0	0	0
G/C	300.0	305.0	310.0	315.0	320.0	325.0	330.0	335.0	340.0	345.0
0.0	1979	1979	1979	1979	1979	1979	1979	1979	1979	1979
2.5	1961	1962	1963	1963	1965	1966	1967	1968	1970	1971
5.0	1942	1943	1944	1945	1947	1949	1951	1953	1955	1958
7.5	1921	1922	1923	1924	1926	1928	1930	1933	1936	1939
10.0	1899	1899	1900	1900	1901	1903	1905	1908	1911	1915
12.5	1876	1875	1875	1874	1874	1875	1877	1879	1882	1887
15.0	1852	1850	1848	1846	1845	1844	1845	1846	1849	1853
17.5	1823	1823	1819	1816	1812	1810	1809	1810	1812	1817
20.0	1763	1770	1780	1783	1777	1773	1771	1769	1771	1774
22.5	1700	1705	1713	1724	1740	1733	1727	1723	1723	1726
25.0	1635	1637	1641	1651	1666	1687	1677	1670	1667	1669
27.5	1566	1563	1564	1569	1581	1599	1617	1603	1596	1596
30.0	1493	1485	1479	1478	1484	1497	1517	1519	1506	1503
32.5	1417	1400	1386	1377	1375	1381	1393	1411	1393	1388
35.0	1305	1309	1284	1266	1256	1254	1258	1269	1269	1263
37.5	1165	1169	1169	1147	1131	1123	1121	1129	1144	1138
40.0	1027	1029	1026	1020	1005	993.4	990.3	996.6	1014	1013
42.5	889.7	892.1	892.9	890.5	881.9	870.9	866.5	871.9	886.2	888.0
45.0	755.5	761.3	769.7	774.2	768.5	754.8	751.0	758.6	765.7	761.8
47.5	624.6	638.6	658.1	669.5	667.4	653.0	651.0	660.0	655.2	631.0
50.0	521.3	525.1	557.9	576.6	576.9	570.0	571.8	580.4	560.3	521.8
52.5	463.6	459.2	467.7	493.6	498.0	501.3	514.5	520.0	481.8	439.1
55.0	409.3	409.9	417.5	421.0	431.1	446.5	468.5	462.4	412.5	377.3
57.5	357.9	361.1	369.0	375.1	376.5	404.9	427.5	401.4	353.6	328.6
60.0	308.4	312.6	322.2	336.2	347.4	372.7	388.8	348.8	308.1	292.8
62.5	260.2	264.5	278.6	304.4	321.0	340.1	353.6	302.8	272.1	267.9
65.0	220.4	218.9	239.5	278.3	290.3	297.7	306.3	257.1	236.2	247.3
67.5	185.2	185.9	208.5	254.9	251.2	251.5	258.0	210.6	202.3	215.8
70.0	150.6	154.0	180.9	225.7	206.9	209.2	218.4	180.0	178.5	183.7
72.5	116.4	122.5	152.9	195.8	175.2	178.1	188.5	161.6	166.4	157.7
75.0	82.70	91.44	124.0	167.3	147.0	153.7	160.6	147.4	147.9	134.3
77.5	49.57	60.46	94.06	139.8	120.7	125.3	127.8	124.8	122.0	104.5
80.0	17.11	25.68	50.41	97.69	94.92	94.42	96.82	96.35	95.21	81.22
82.5	0	0	0	13.36	28.53	45.65	65.27	69.51	71.39	63.27
85.0	0	0	0	0	0	0	0	19.80	45.77	45.57
87.5	0	0	0	0	0	0	0	0	0	0
90.0	0	0	0	0	0	0	0	0	0	0
G/C	350.0	355.0								
0.0	1979	1979								
2.5	1973	1975								
5.0	1961	1964								
7.5	1943	1948								
10.0	1920	1925								
12.5	1892	1898								
15.0	1859	1867								
17.5	1823	1831								
20.0	1781	1790								
22.5	1734	1745								
25.0	1676	1690								
27.5	1606	1623								
30.0	1512	1533								
32.5	1397	1421								
35.0	1273	1298								
37.5	1145	1166								
40.0	1012	1024								
42.5	875.8	878.4								
45.0	736.5	729.6								
47.5	601.0	588.3								
50.0	490.5	475.0								
52.5	413.6	393.6								
55.0	361.0	335.3								
57.5	316.7	293.1								
60.0	276.7	258.7								
62.5	241.0	222.5								

C Range: 0 - 360DEG
 C Interval: 5.0DEG
 Test Speed: HIGH
 Temperature: 25.3DEG
 Operators: DAMIN
 Test Date: 2023-06-21

γ Range: 0 - 90DEG
 γ Interval: 0.5DEG
 Test System: EVERFINE GO-2000A_V1 SYSTEM V2.0.286
 Humidity: 65.0%
 Test Distance: 13.420m [K=1.0000]
 Remarks: IL-PN195U(S) 3.500K 32W 3500K

Photometric Data Table [cd]

65.0	208.6	186.7
67.5	177.5	153.4
70.0	146.5	122.3
72.5	114.0	91.45
75.0	87.40	67.77
77.5	71.50	52.73
80.0	62.13	44.38
82.5	50.37	39.44
85.0	37.88	29.00
87.5	19.61	10.50
90.0	0	0

C Range: 0 - 360DEG
 C Interval: 5.0DEG
 Test Speed: HIGH
 Temperature:25.3DEG
 Operators:DAMIN
 Test Date:2023-06-21

γ Range: 0 - 90DEG
 γ Interval: 0.5DEG
 Test System:EVERFINE GO-2000A_V1 SYSTEM V2.0.286
 Humidity:65.0%
 Test Distance:13.420m [K=1.0000]
 Remarks: IL-PN195U(S) 3.500K 32W 3500K